

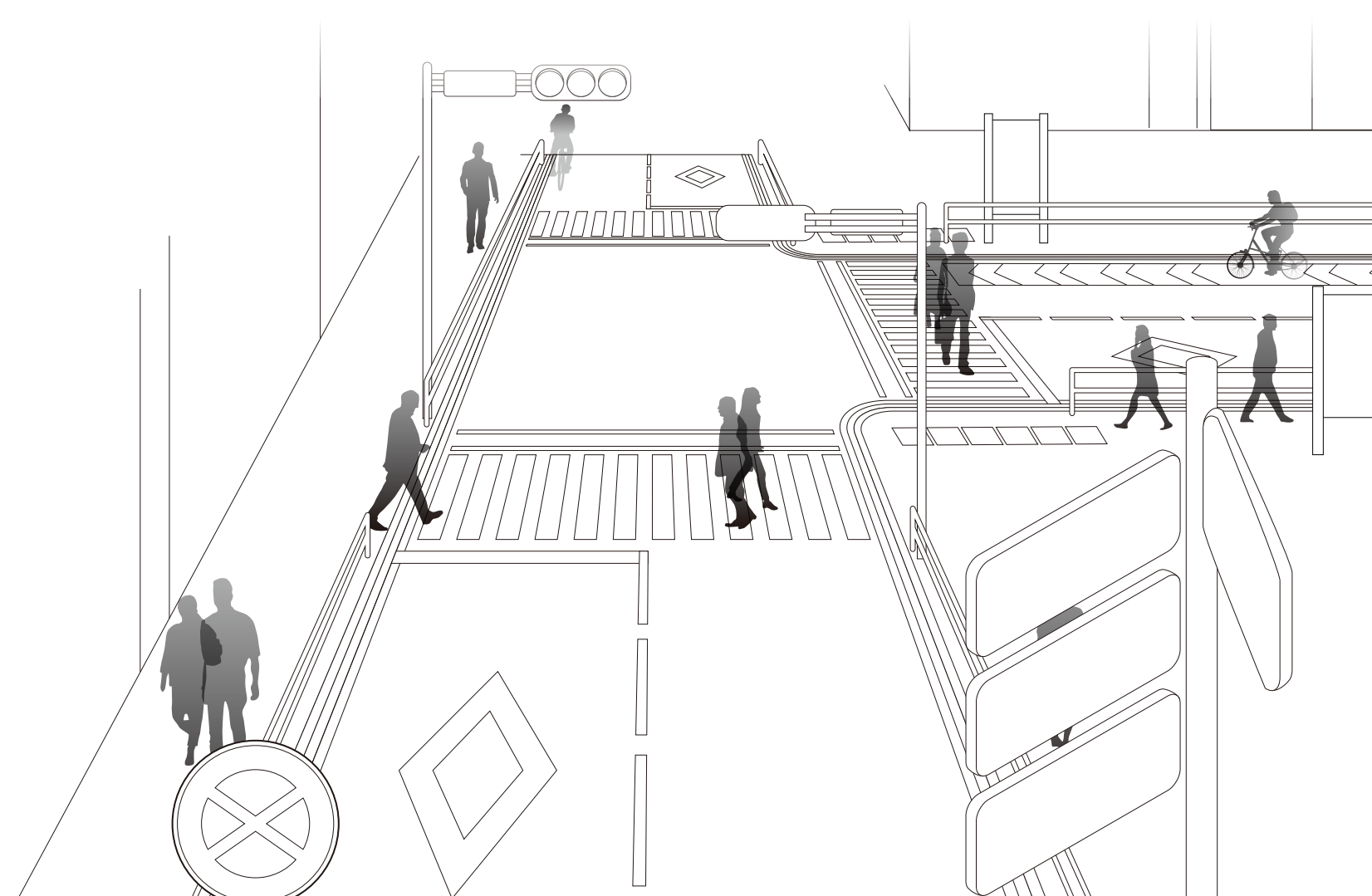
# Amenity & Art

better environment and creative technology



Miyagawa Kogyo Co., Ltd.

## Company Brochure



Miyagawa Kogyo Co., Ltd.

Head office  
1-20-28 Shibuya, Shibuya-ku, Tokyo 150-0002, Japan  
TEL 03-3407-1002

 **宮川興業株式会社**  
Miyagawa Kogyo Co., Ltd.  
<http://www.miyagawa-co.com/>



Welcome to the busiest intersection in the world.  
If you come to Tokyo, you will definitely come here.  
"Shibuya Crossing"  
And you will see the sign, cross the pedestrian crossing,  
and take a commemorative photo while leaning on the guardrail.  
There is our job there.  
Our job is to install and maintain traffic safety facilities.  
We are doing our best every day  
to protect the safe and comfortable traffic environment.

Regulatory sign

Road markings

Maintenance of  
bicycle use environment

Road maintenance  
for autonomous driving

Crosswalk

Braille sheet

Installation of information signs  
for foreigners visiting Japan

Protective fence

Color pavement





# Create **everyday safety** as a professional of “**Michi**”

In order to contribute to traffic safety and smoothness, and to protect irreplaceable lives, we design and construct facilities attached to roads such as road signs and road lane markings with high-quality technical capabilities. The original know-how and achievements since its establishment have earned the trust of the clients.

## [Business description]

**Sales of traffic safety facilities and related businesses, road marking paints, etc.**

- ▶ Traffic safety facilities(road markings, lane markings, various signs, reflectors, protective fences, sound insulation walls, etc.)
- ▶ Comprehensive environmental maintenance(road pavement, stone paving, large monuments, landscape sign, etc.)
- ▶ Information system(road accessory management system, “MEMO”, road lane marking system “ROADVIEWER”)
- ▶ Various construction, bridge repair reinforcement work, the light-emitting type design labels, road affiliated structures.



## Work flow

START

### 01 Meeting

Meeting with the orderer regarding the construction, budget etc.



### 02

### Construction preparation

Preview of the planned construction site, arrangement of partner companies, arrangement of materials and construction vehicles, etc.



### 03

### Construction management

Supports the smooth progress of construction work such as process management, safety management, and quality control.



### 04

### Completion and inspection

Check the site and documents in the presence of the client.



FINISH





# Construction examples

## [Lane marking construction]



## [Creating a path that changes with society]

■ Development of bicycle use environment



Bicycle navigation mark



Bicycle navigation line



Bicycle pedestrian road maintenance

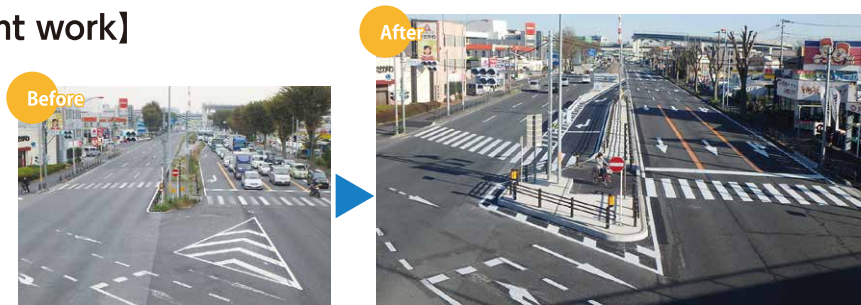
## [Sign construction]



## [Construction for visually impaired person guidance sheet]



## [Intersection improvement work]



The usefulness of bicycles has been recognized once again due to the frequent occurrences of repeated disasters, increased awareness of health promotion and environmental conservation, and the diversification of usage methods such as the distribution industry and bicycles rental. It has become. In order to create a safe and comfortable driving environment for pedestrians, bicycles, and automobiles, road markings such as a the “Bicycle Navi Mark” and “Bicycle Nave Line” and the maintenance of bicycle-specific roads are necessary.

■ Create easy-to-understand signs for foreign tourists visiting Japan



From Roman Letters to English

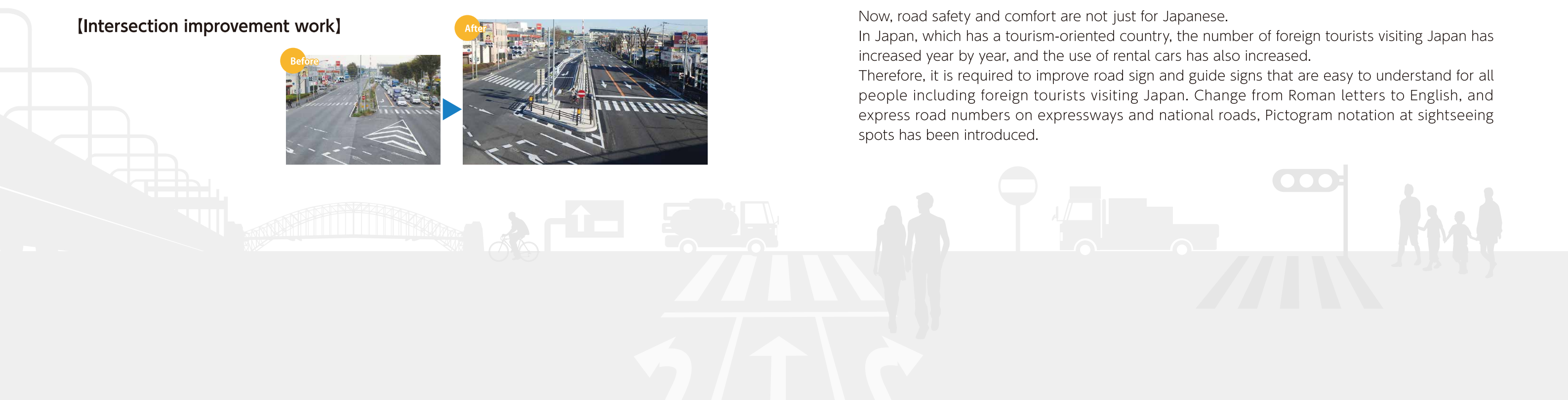


Route number notation



Pictogram notation

Now, road safety and comfort are not just for Japanese. In Japan, which has a tourism-oriented country, the number of foreign tourists visiting Japan has increased year by year, and the use of rental cars has also increased. Therefore, it is required to improve road sign and guide signs that are easy to understand for all people including foreign tourists visiting Japan. Change from Roman letters to English, and express road numbers on expressways and national roads, Pictogram notation at sightseeing spots has been introduced.





# List of our products

## Power generation melt kneader

MSN-300-III

Previous kneader vehicles have been a direct fire system using LP gas as a heat source, so it was not possible to completely deny the danger of fire accidents. A power generation melt kneader was developed to drastically improve this problem. It has become safer by switching from the direct LP gas direct method to electric heater system. The work efficiency and energy saving rate have increased, making the system friendly to both people and the Earth.



## Thermo router

Heated asphalt sealant electric melting pot.

Safer melting pot with generator and electric heater. Equipped with a temperature sensor and timer, it automatically controls the melting state and power generation load with simple operations. Since the temperature rises linearly at a constant rate, stable quality can be obtained without the need for skillful techniques such as fine adjustment of thermal power. By changing from gas to electricity, it has reduced a CO2 and become a friendly system to Earth.



## River Line

Road marking lines and road marking paints.

River Line is a road marking paint with high visibility, durability and weather resistance. Based on research and strict quality control, we continue to make various improvements, and today we have gained the trust of many people as a safe brand.



## WJP (Water Jet Peeler System)

Ultra-high-pressure water surface treatment method.

This system uses ultra-high-pressure water jets to inject ultra-high-pressure water to erase road markings, and at the same time collects waste materials and treated water. It can completely remove the marking material that has flowed into the gap between aggregates, which is a feature of drainage pavement, without damaging the road surface.



# System development

## MEMO (Multiple Easy Maintenance Operating-System)

Road accessory maintenance management support system.

Road sign management was a time-consuming and labor-intensive task using paper media until a while ago. Therefore, MEMO was developed.

Anyone can easily operate with the visualized operation system, and the type of sign is displayed as an icon on the map, so it is possible to instantly determine where and what the sign is. In addition, it is possible to search from various directions such as installation location, route, installation date, repair history.

Born from experience in the field of sign maintenance management. This is a revolutionary system.

Expect maximum performance with minimum effort.



## ROADVIEWER (RMAD)

Lane marking diagnostic system.

Checking the current status of lane marking is an important issue for the practical application and spread of autonomous vehicles. However, the number of lanes marking spread throughout the country is enormous, and it requires a lot of money and time just to update the current situation.

ROADVIEWER is a lane marking survey and diagnostic system developed to solve these problems.

The camera automatically shoots while driving on the road with a smartphone installed in the car, AI automatically recognizes the lane marking from the shooting data, automatically calculates the stages of red, yellow, and blue.

This is display in color further up to repainting standard and extended quantity. By utilizing IT technology, the cost of the survey is reduced, and the health of the lane marking is quantitatively and easily diagnosed. This product was born from the desire to make the workplace safer and more comfortable.







## Message from the CEO

We Miyagawa Kogyo Co., Ltd have been researching way to impressive its safety and comfort as a professional group of "Michi", the social lifeline. To this date, we have always committed to improve technology and developed products based on our unique knowledge and truck records, in addition to our themes <Amenity (better environment)> and <Art (creative technology)>. As a result, we have taken on our new challenges together with people from various fields, and we're proud to have contributed to the development of the safety facility industry. In the future, we are expected to continue to discover solutions applicable to various trends, including automated driving. We are also pursuing innovative initiatives such as new technologies including ICT and AI, and as a professional group for "Michi" more than ever, we will continue to explore new ways of "roads" for the next generation.

Satoshi Miyagawa



### 【Management Philosophy】

“Provide products that are truly necessary for the continued prosperity of our customers”

### 【Action Policy】

Miyagawa Kogyo Co., Ltd. actively works to improve quality, and protect the environment with creative technology through construction activities for civil engineering structures, traffic safety facilities and building structures.

We always consider customer satisfaction as the top priority, comply with laws and regulations and other requirements, respond quickly to customer requirements by optimizing people, things and times, comply with contractual obligations, ISO requirements, and carry out continuous improvement activities.

This policy will be widely disclosed to the public, and will be thoroughly communicated, implemented and maintained by all employees and related parties.

### 【Our priority implementation items】

1. We always strive to improve quality and provide our customers with the best construction and service.
2. We will strive to prevent environmental pollution through appropriate management of waste and effective use of resources.



【ISO】  
ISO9001 (Acquired on 23th March 2006)  
ISO14001 (Acquired on 31st May 2012)